

Application No:

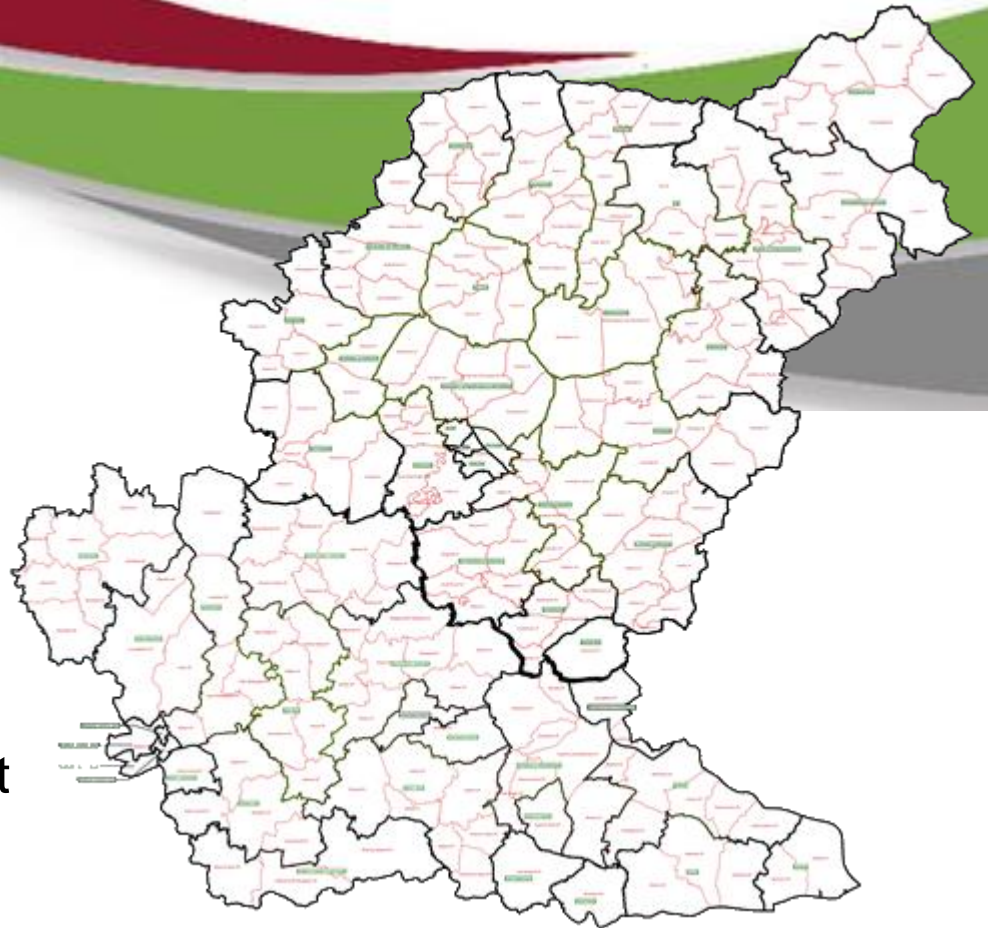
DC/22/03464

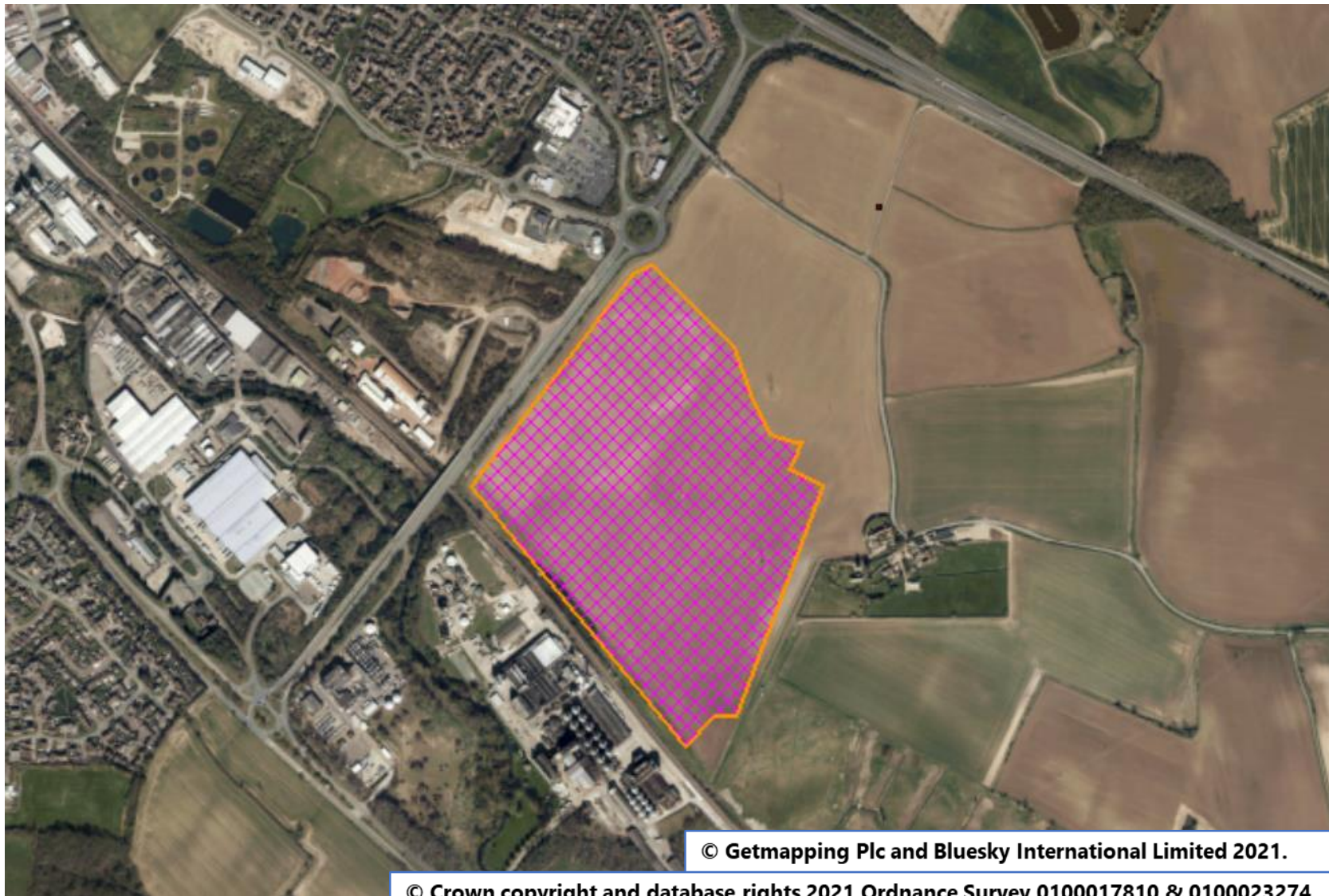
Address:

**Gateway 14,
Land Between The A1120 and
A14, Stowmarket**

Proposal:

Submission of details for
Appearance, Landscaping, Layout
and Scale for Plot 4000



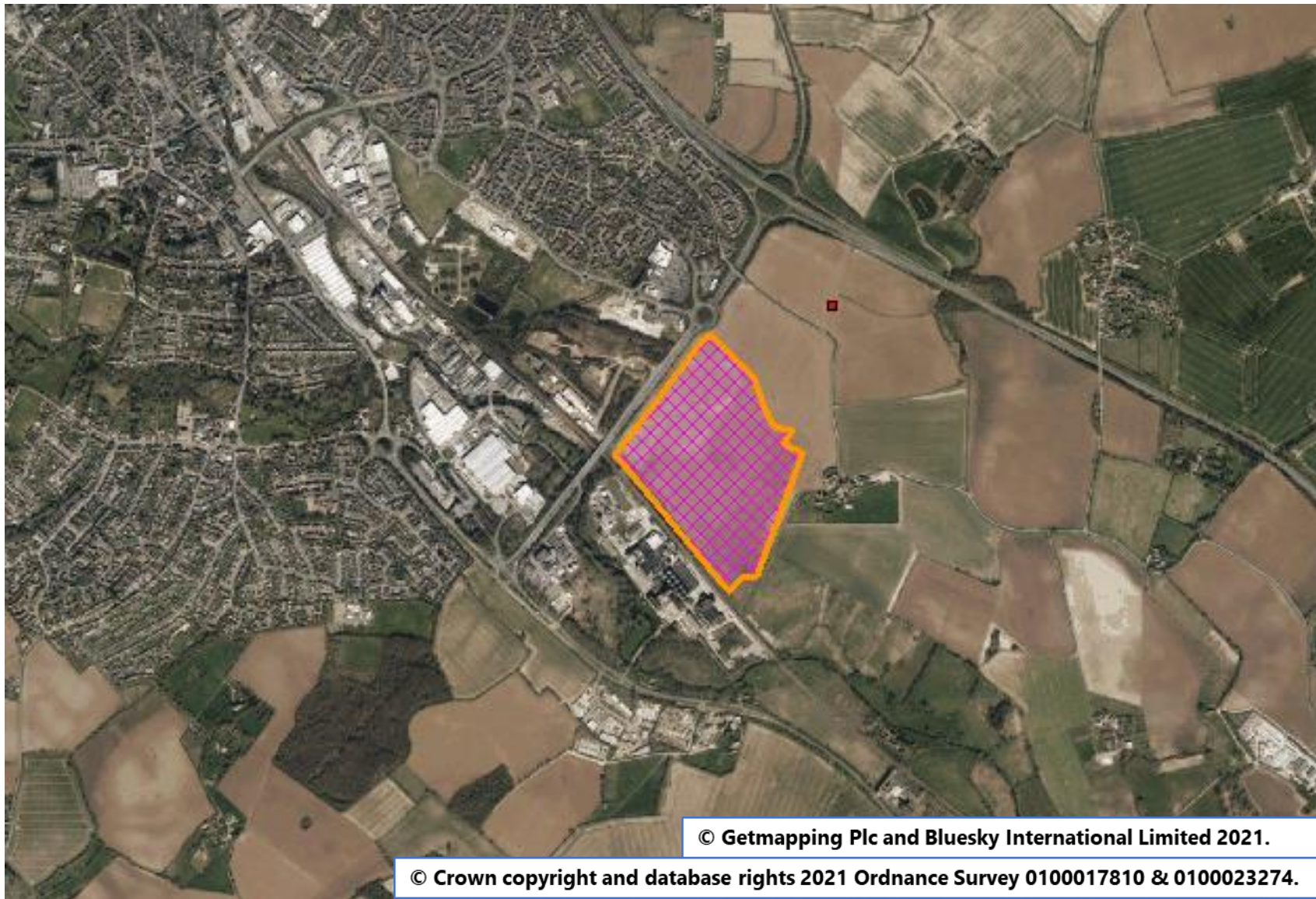


© Getmapping Plc and Bluesky International Limited 2021.

© Crown copyright and database rights 2021 Ordnance Survey 0100017810 & 0100023274.

Aerial Map – wider view

Slide 3

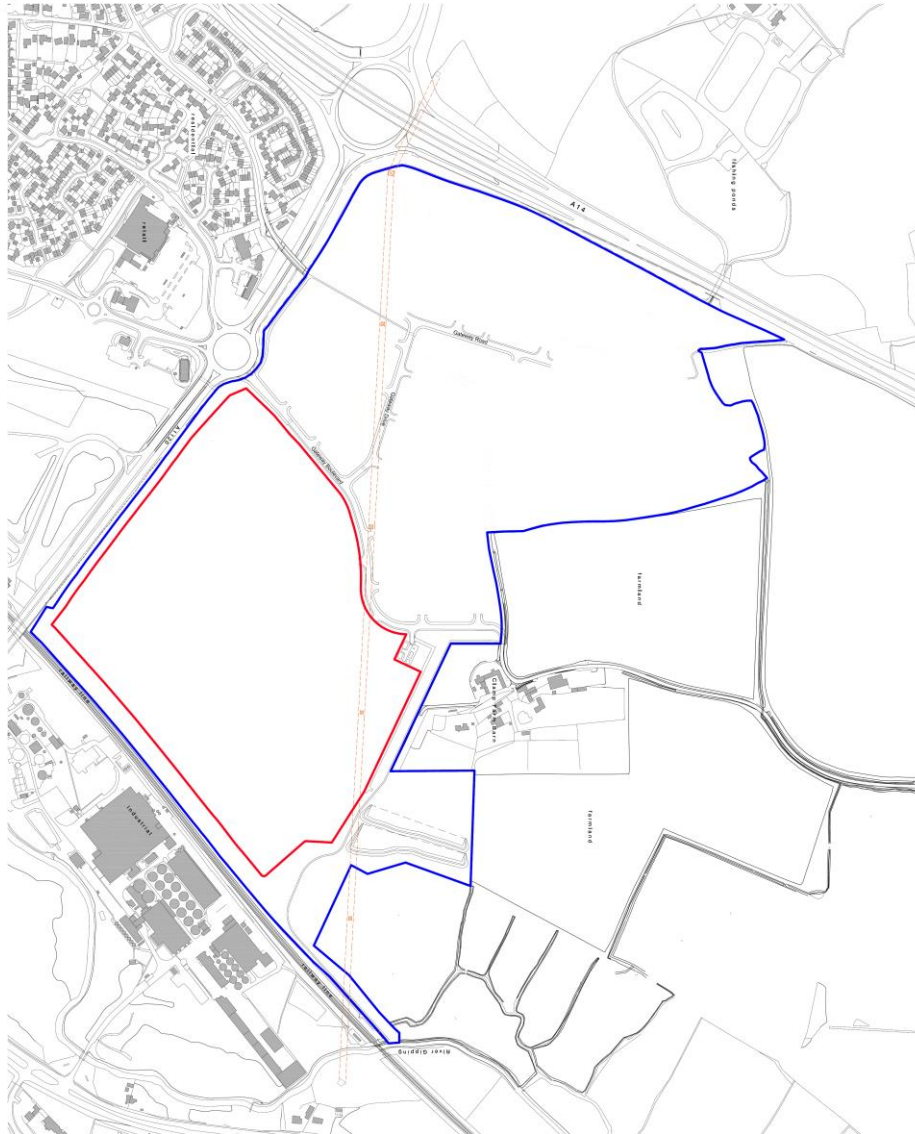


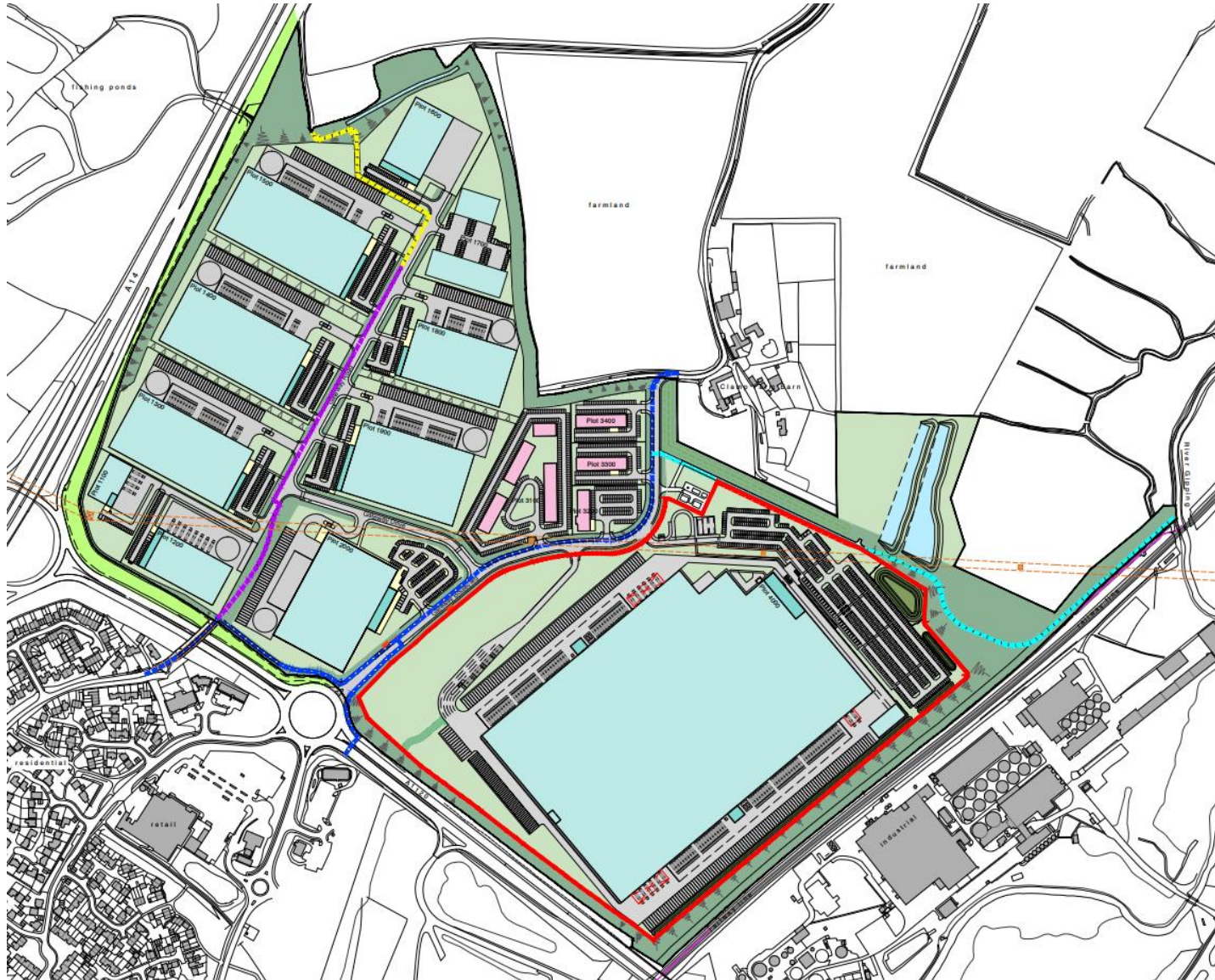
© Getmapping Plc and Bluesky International Limited 2021.

© Crown copyright and database rights 2021 Ordnance Survey 0100017810 & 0100023274.

Site Location Plan


Slide 4







Constraints Map

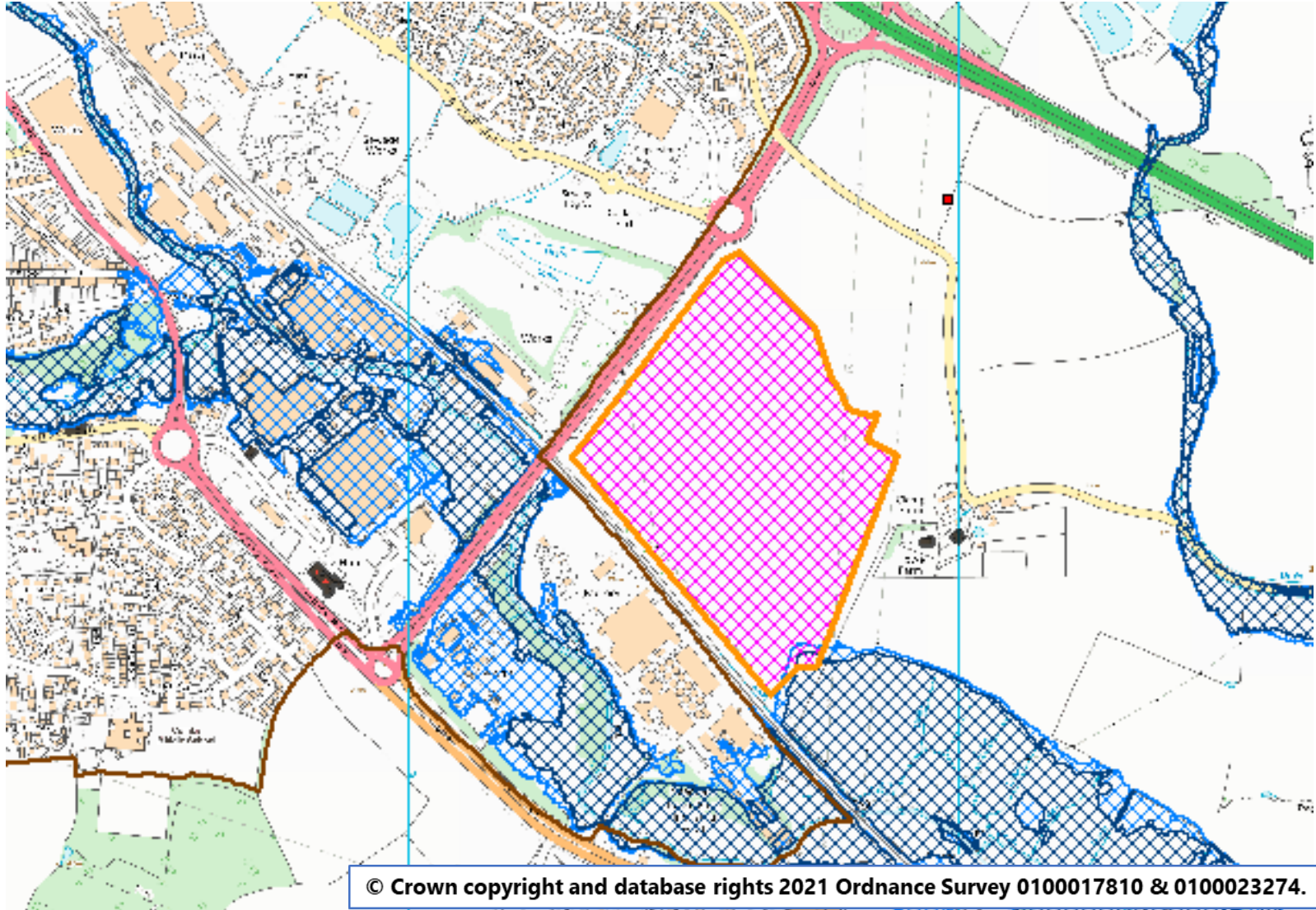
 Built Up Area Boundaries

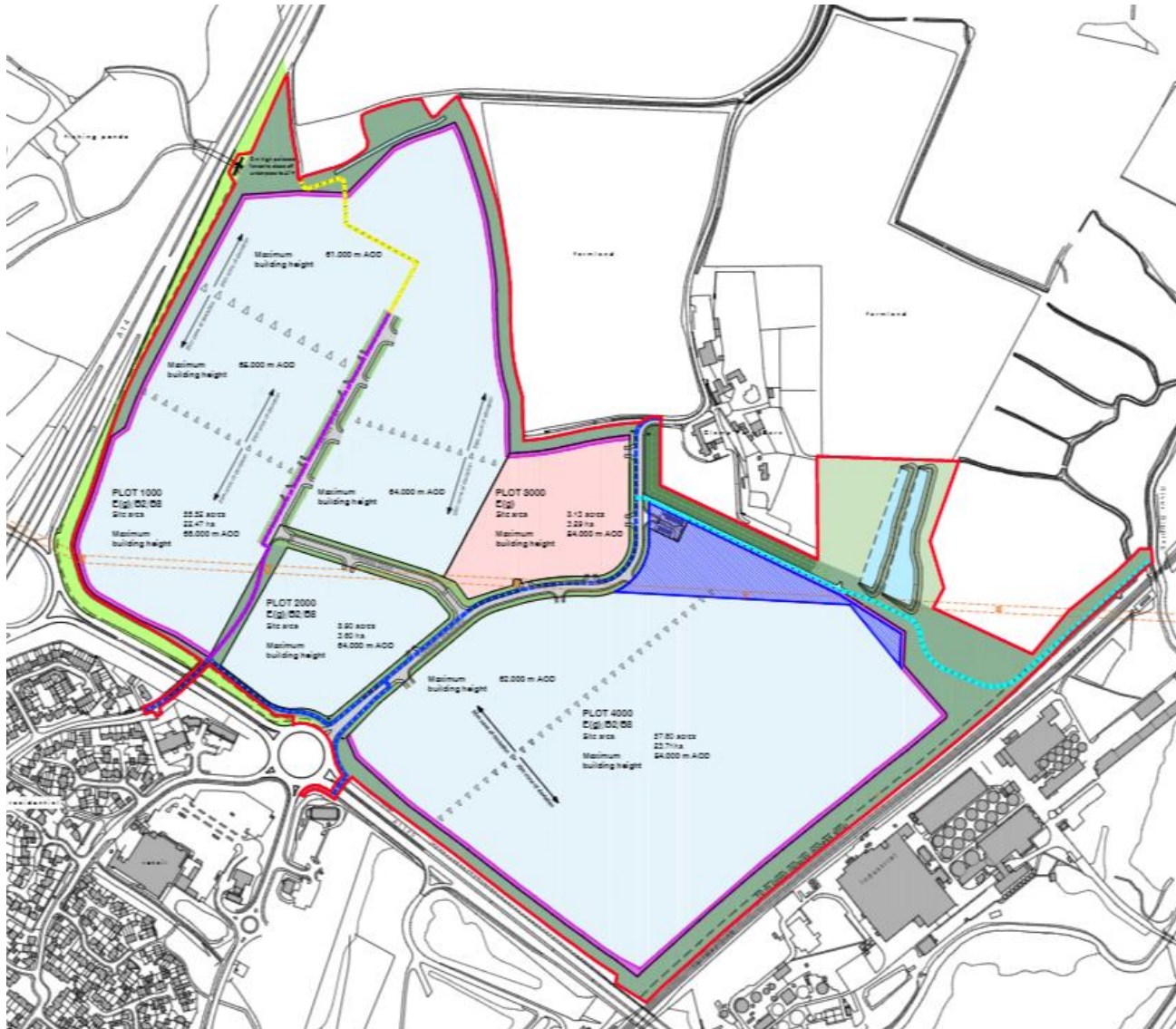
 Flood Zone 2

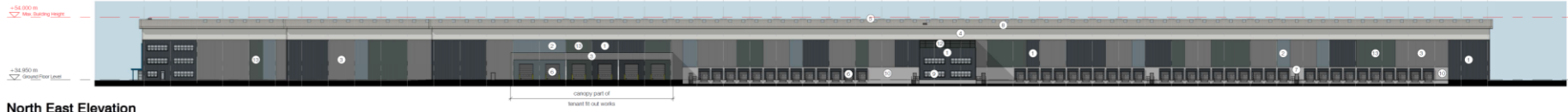
 Flood Zone 3

Listed Buildings

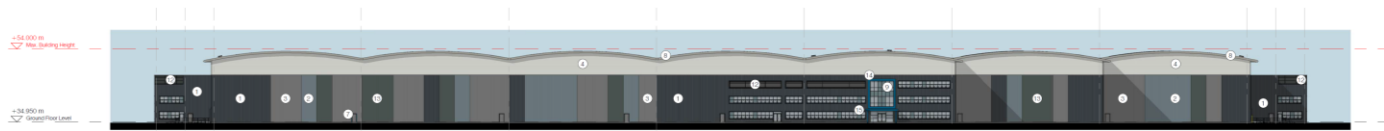
 Grade II







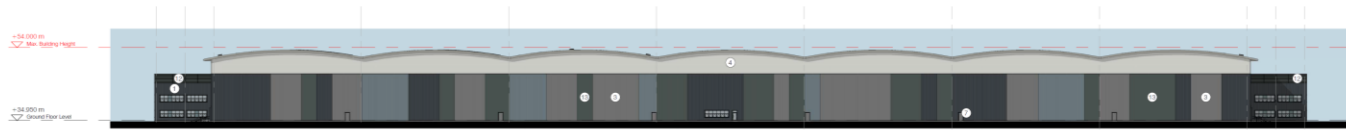
North East Elevation



South East Elevation



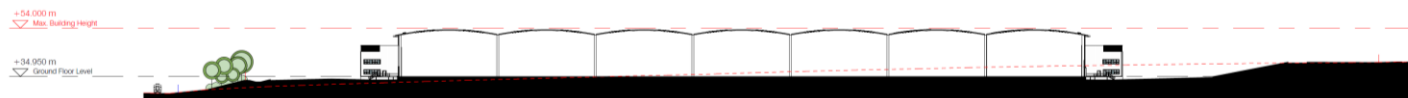
South West Elevation



North West Elevation

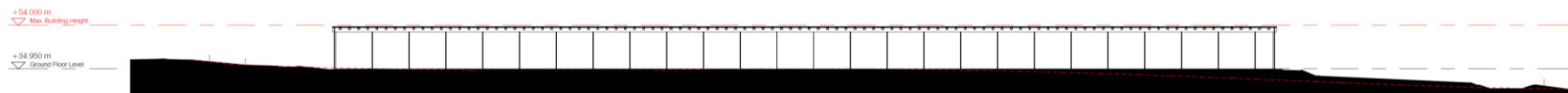


Typical Section



Latitudinal Site Section

1 : 1000

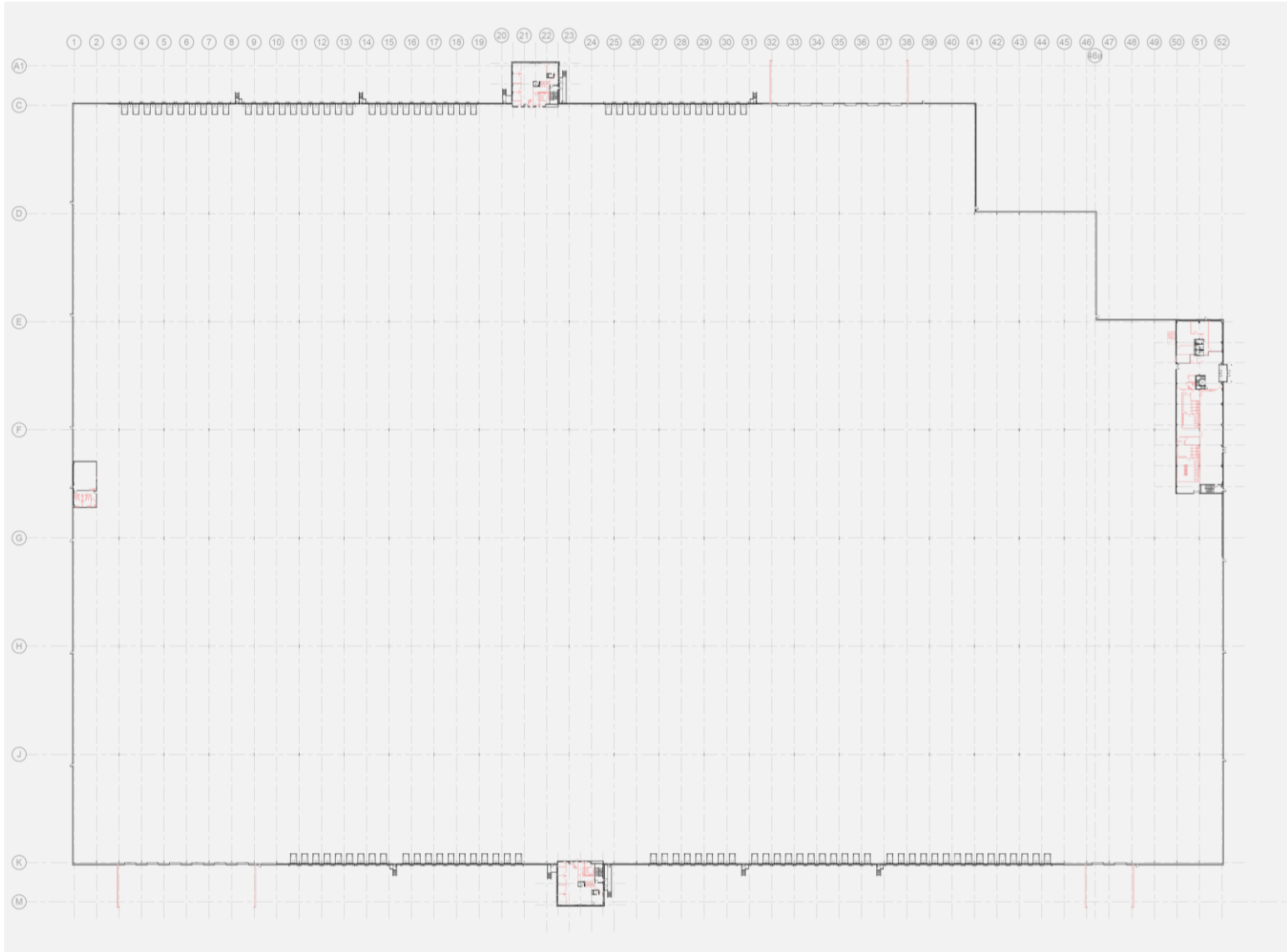


Longitudinal Site Section

1 : 1000

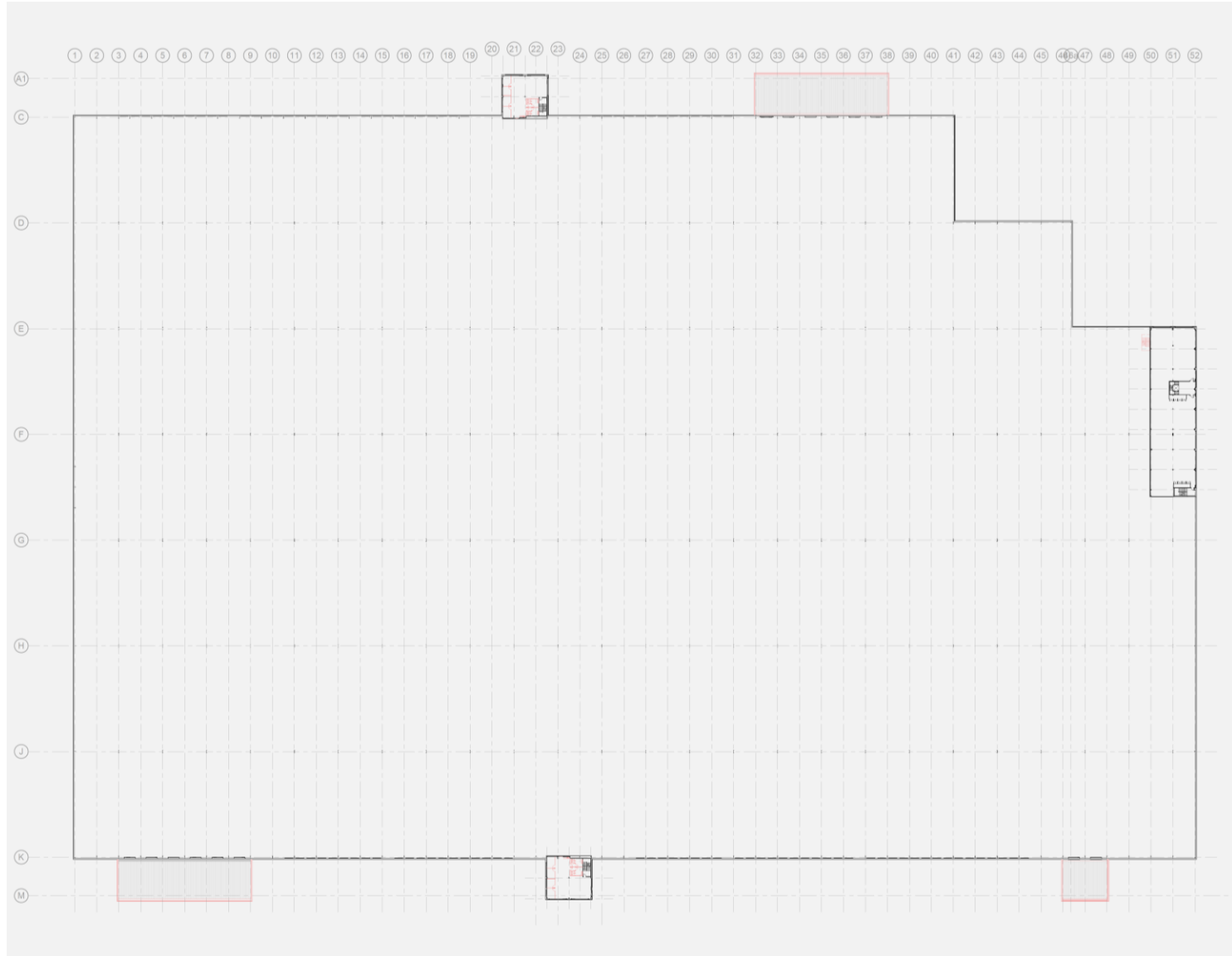
Proposed Ground Floor Plan

Slide 11



Proposed First Floor Plan

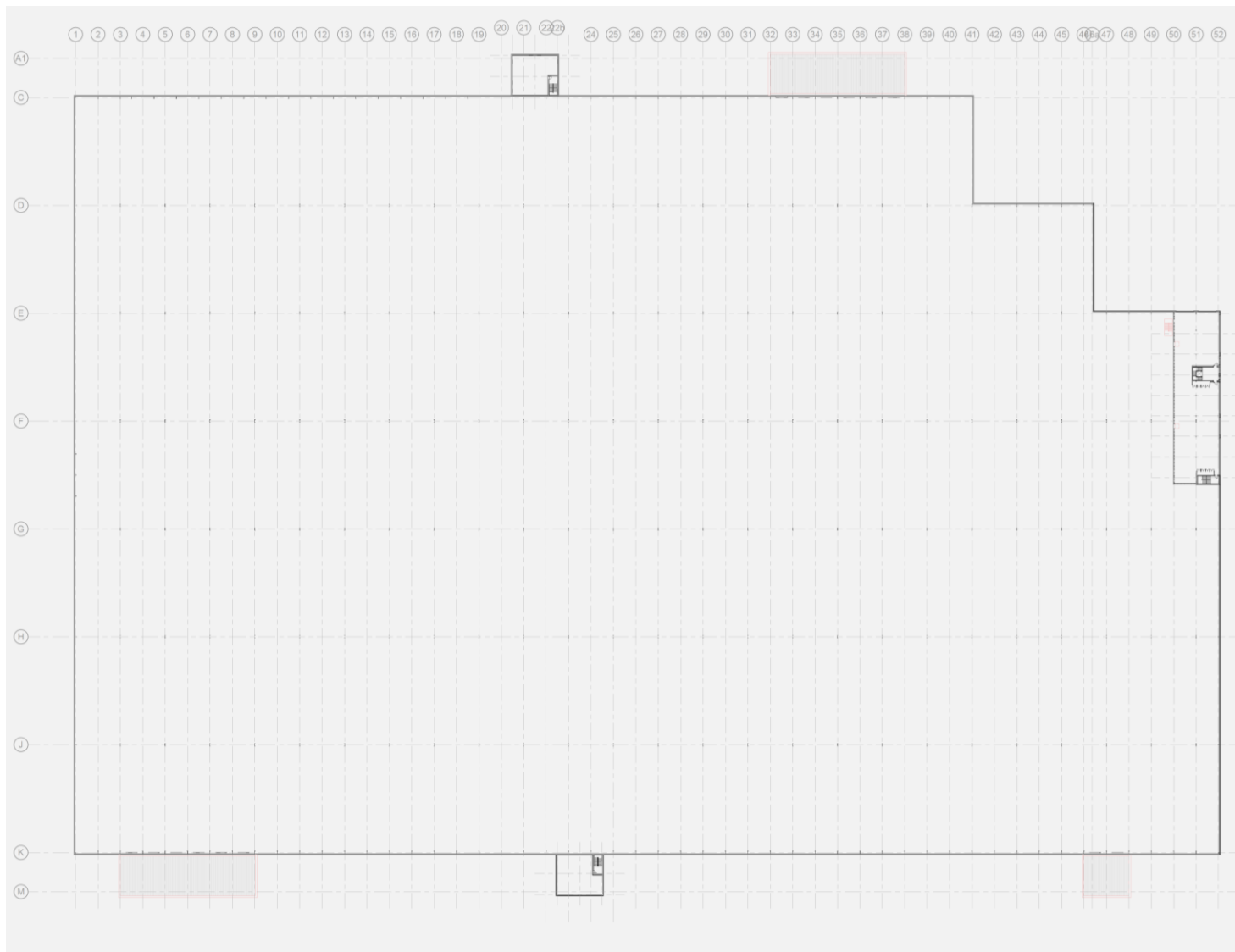
Slide 12



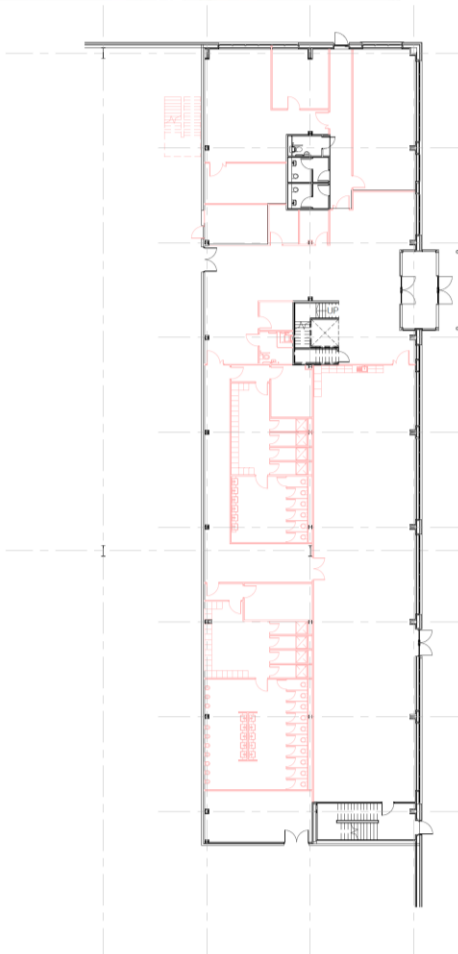


Proposed Second Floor Plan

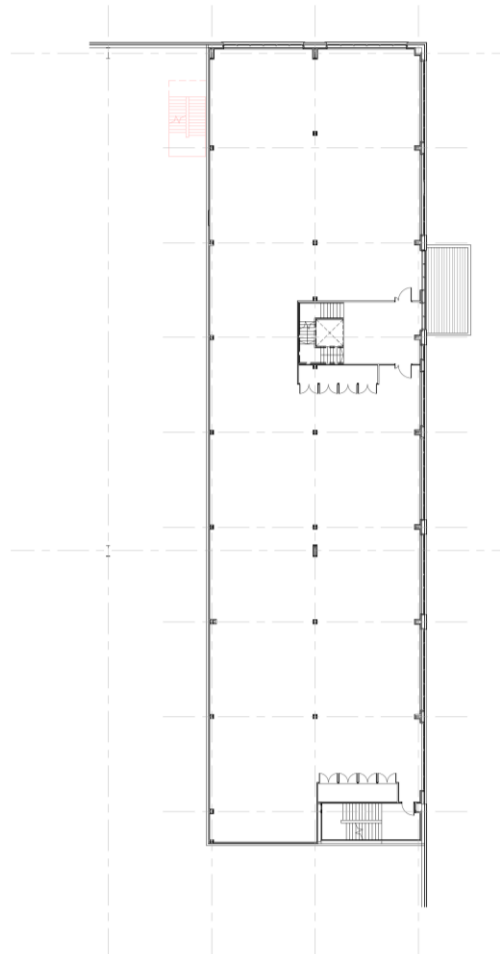
Slide 13



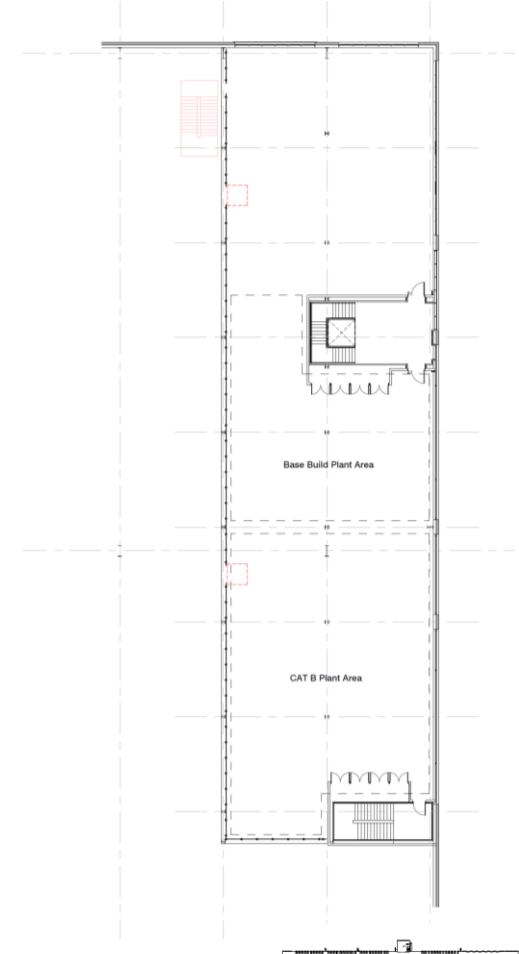
Main Office Plans



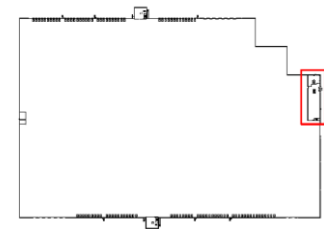
Ground Floor Plan
Office Accommodation



First Floor Plan
Potential Future Office Accommodation



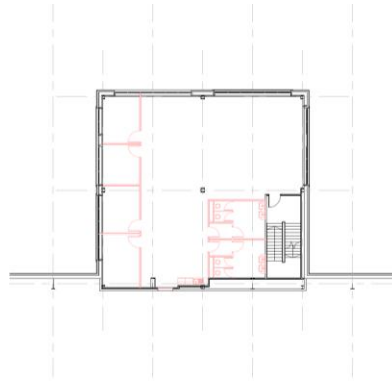
Second Floor Plan
Plant and Storage



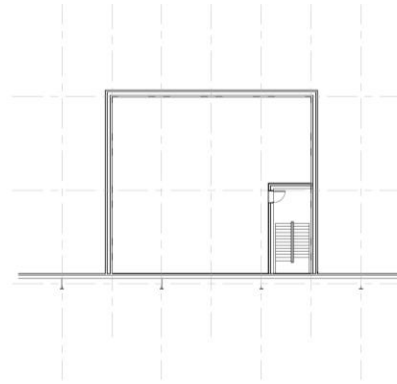
Distribution Office Plans



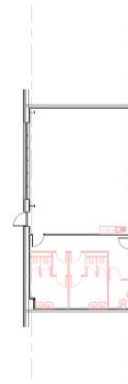
Distribution Office 1 Ground Floor Plan
Office Accommodation



Distribution Office 1 First Floor Plan
Office Accommodation



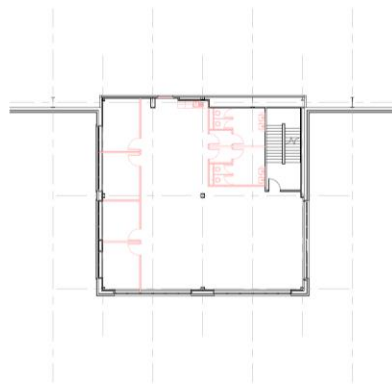
Distribution Office 1 Plant Room Plan
Plant



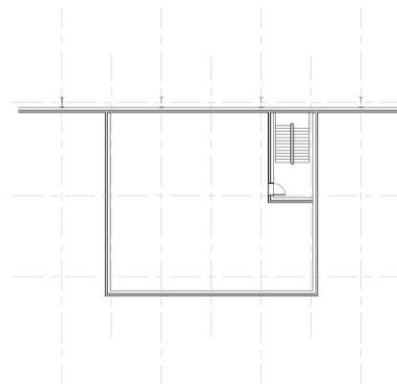
Welfare Area Ground Floor Plan



Distribution Office 2 Ground Floor Plan
Office Accommodation

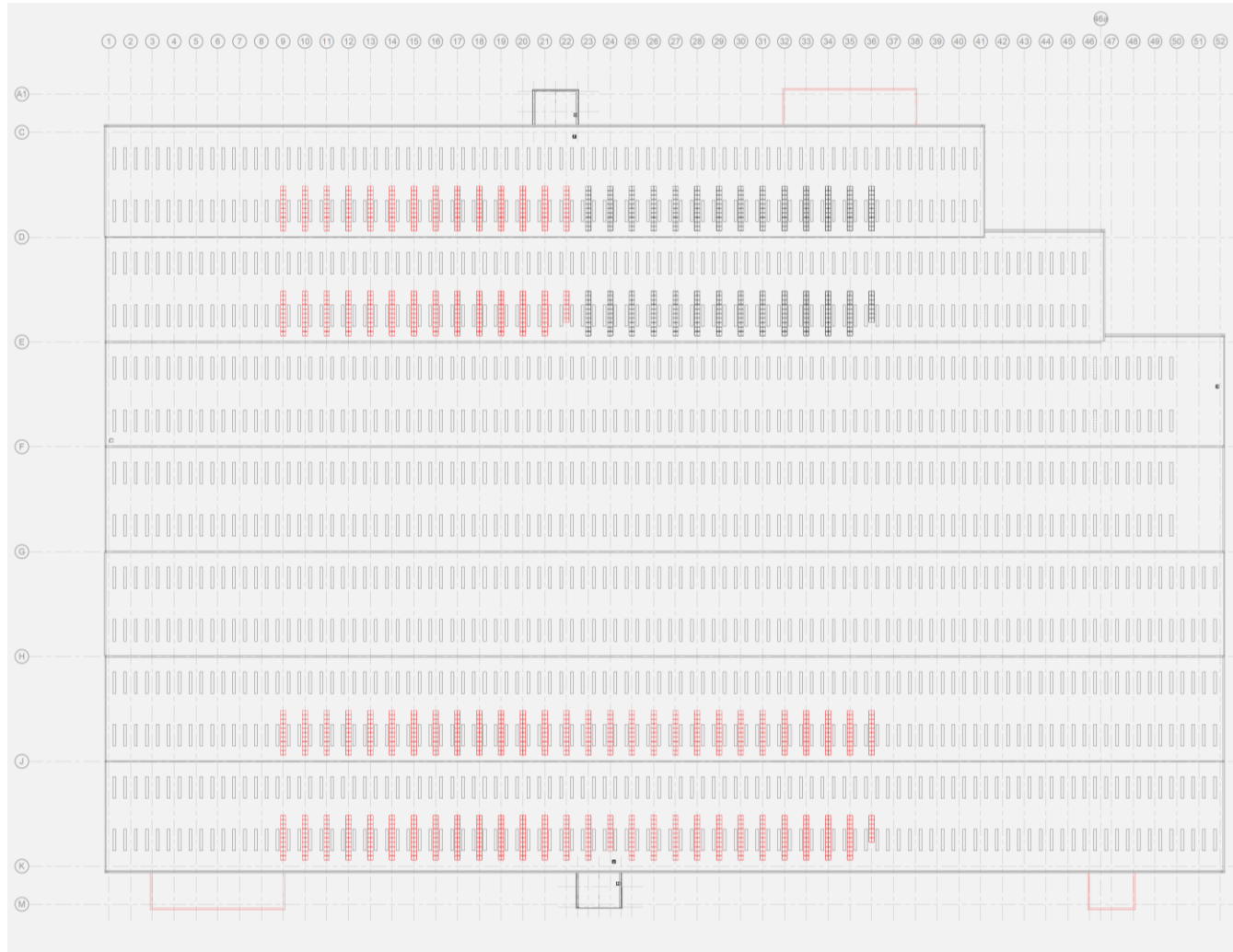


Distribution Office 2 First Floor Plan
Office Accommodation



Distribution Office 2 Plant Room Plan
Plant





NOTE

All elements shown in red are to be part of the CAT B (Fit Out) works and are not to be constructed as part of the CAT A (Base Build).

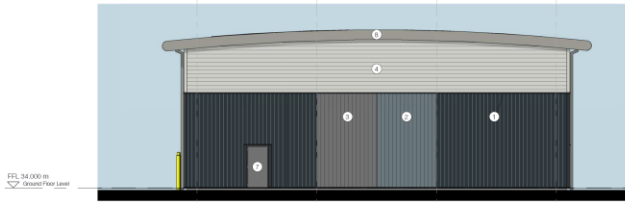
Windows to be fitted with look-a-like glazing and internal lining constructed in CAT A (Base Build) works in preparation for abutment of partitions in future CAT B (Fit Out) works.



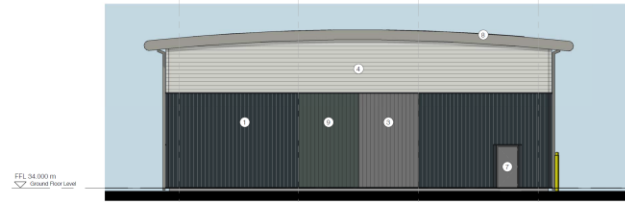
PV Panel Area	
CAT A (Base Build)	= 900m ²
CAT B (Fit Out)	= 2,700m ²
Total	= 3,600m²

Note: The whole extent of the roof has been designed to accommodate further installation of additional PV panels to meet any future requirement or when infrastructure becomes available.

Proposed Elevations and Section – Refuse & Recycling Unit



North West Elevation



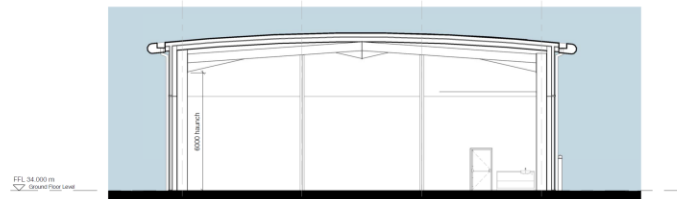
South East Elevation



South West Elevation

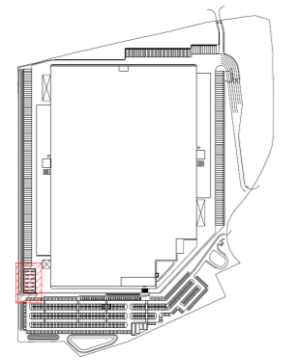
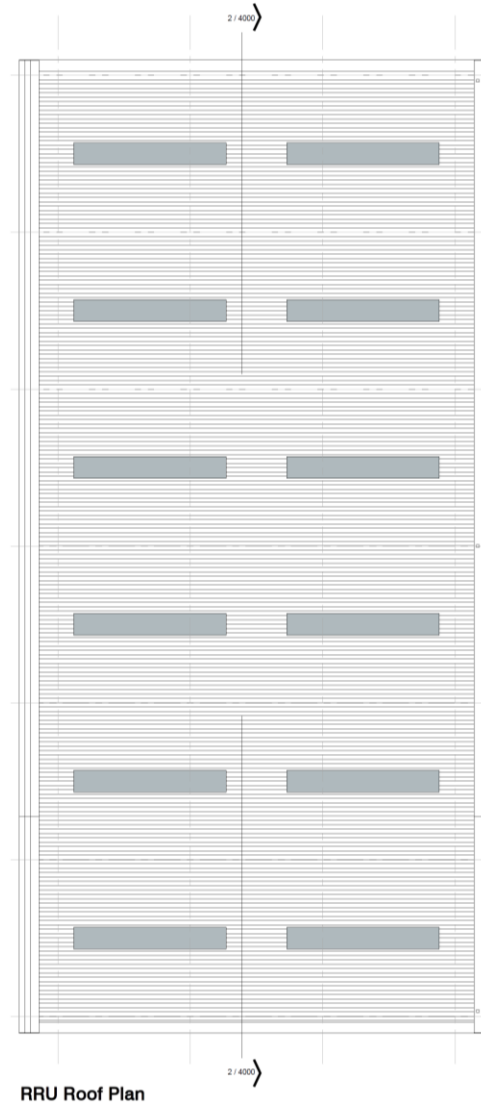
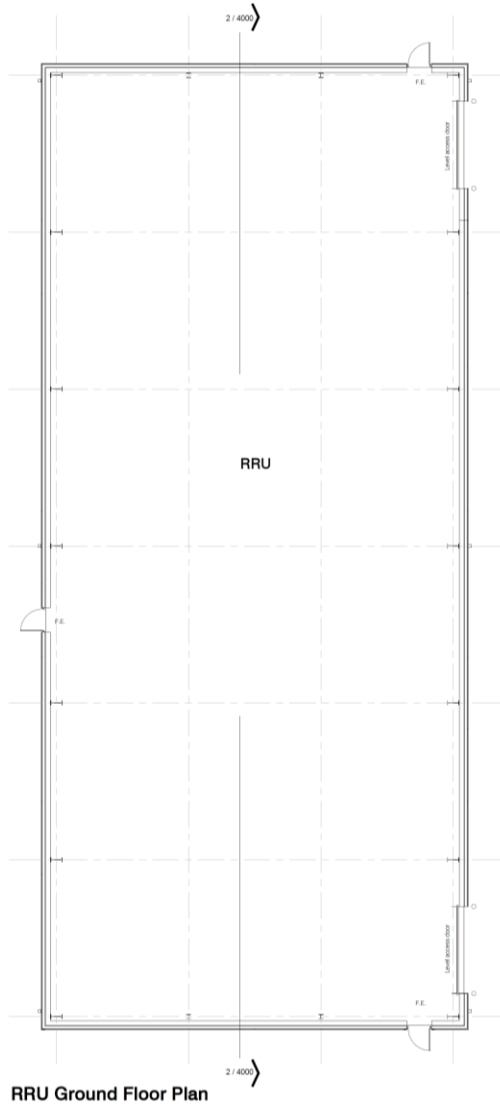


North East Elevation

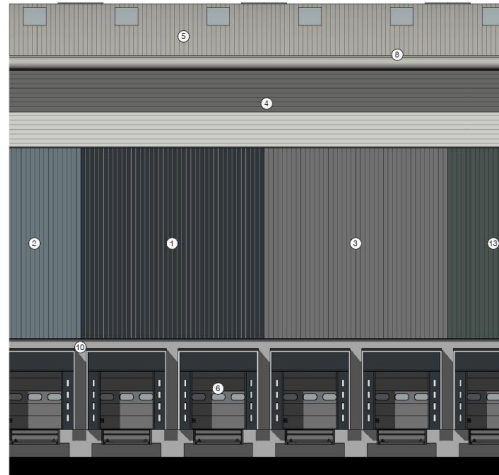
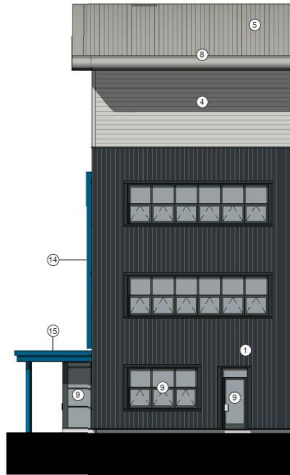


Typical Section

Proposed Floor and Roof Plans - RRU



Proposed External Materials



FINISHES LEGEND

- 1 Site assembled cladding vertically aligned Anthracite Grey (RAL 7016)
- 2 Site assembled cladding vertically aligned Alaska Grey (RAL 7000)
- 3 Site assembled cladding vertically aligned Pure Grey (RAL 000 55 00)
- 4 Site assembled cladding horizontally aligned White (RAL 9003)
- 5 Site assembled roofing with factory assembled triple skinned rooflights Light Goosewing Grey (RAL 7038)
- 6 Insulated section overhead doors Pure Grey (RAL 000 55 00)
- 7 Insulated steel personnel doors Pure Grey (RAL 000 55 00)
- 8 Polyester powder coated aluminium fascias, soffits and rainwater goods Goosewing Grey (RAL 7038)
- 9 Polyester powder coated aluminium curtain walling, windows and entrance doors Merlin (RAL 180 40 05)
- 10 Insulated concrete panels
- 11 Polyester powder coated louvres Pure Grey (RAL 000 55 00)
- 12 Galvanised steel stairs and handrails
- 13 Site assembled cladding vertically aligned Merlin (RAL 180 40 05)
- 14 Polyester powder coated aluminium feature Solent Blue (RAL 240 40 40)
- 15 Polyester powder coated canopy Solent Blue (RAL 240 40 40)



1 2 3 13



4



5



6



7



9



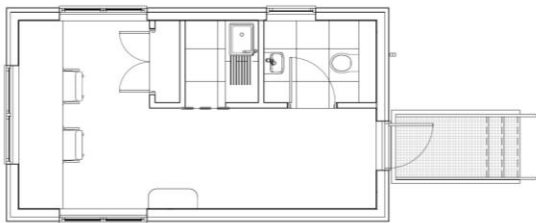
10



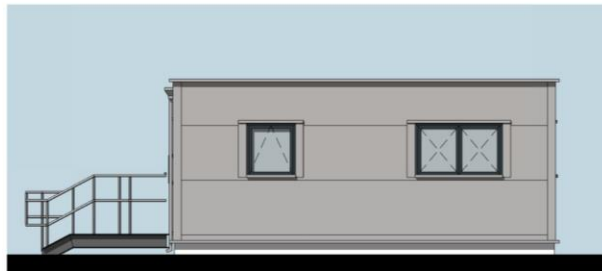
11



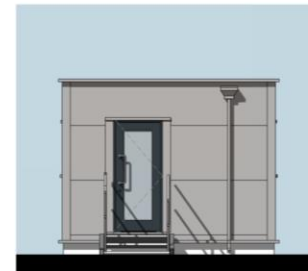
Proposed Gatehouse



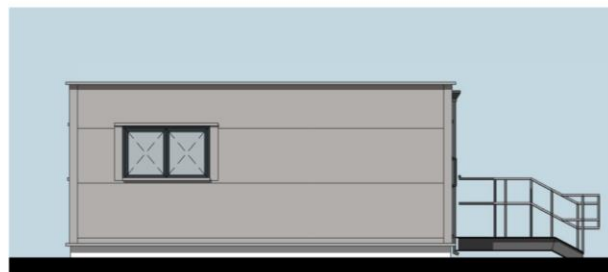
Gatehouse Floor Plan



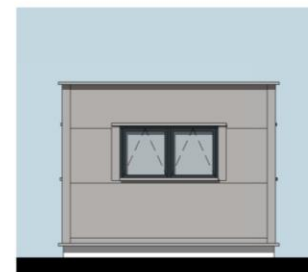
Gatehouse South West Elevation



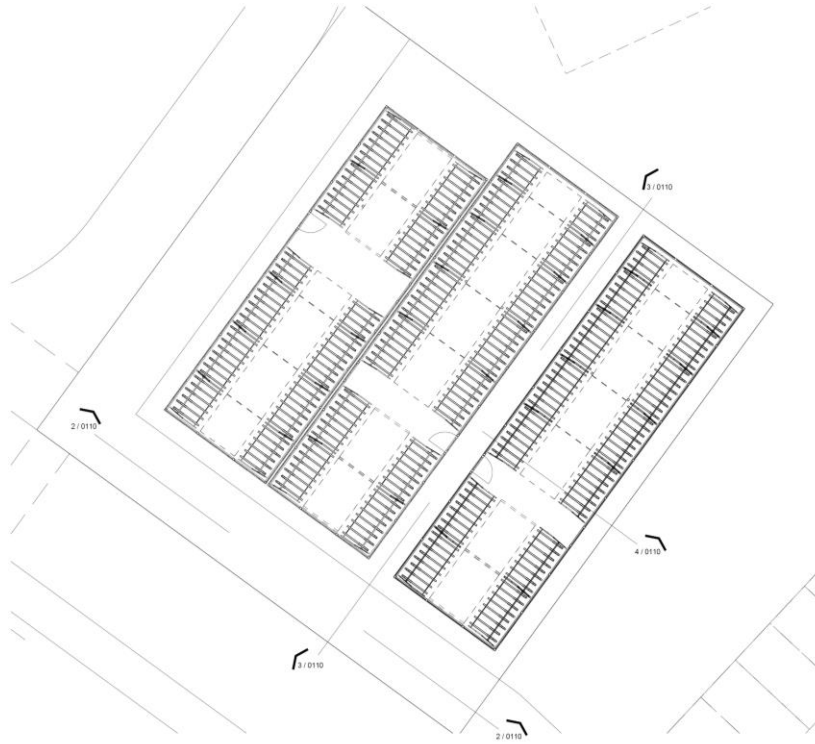
Gatehouse North West Elevation



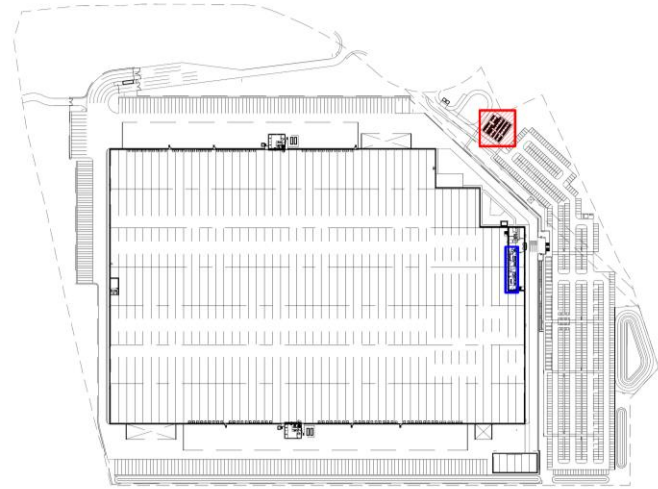
Gatehouse North East Elevation



Gatehouse South East Elevation



1 Cycle Store Plan
1:100



Cycle Store Location Plan

Example Images



Cycle Store



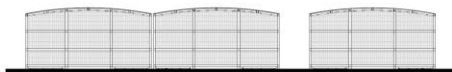
Cycle Racks (2 tier)



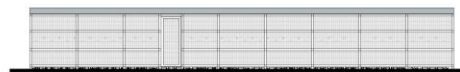
Shower



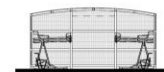
Lockers



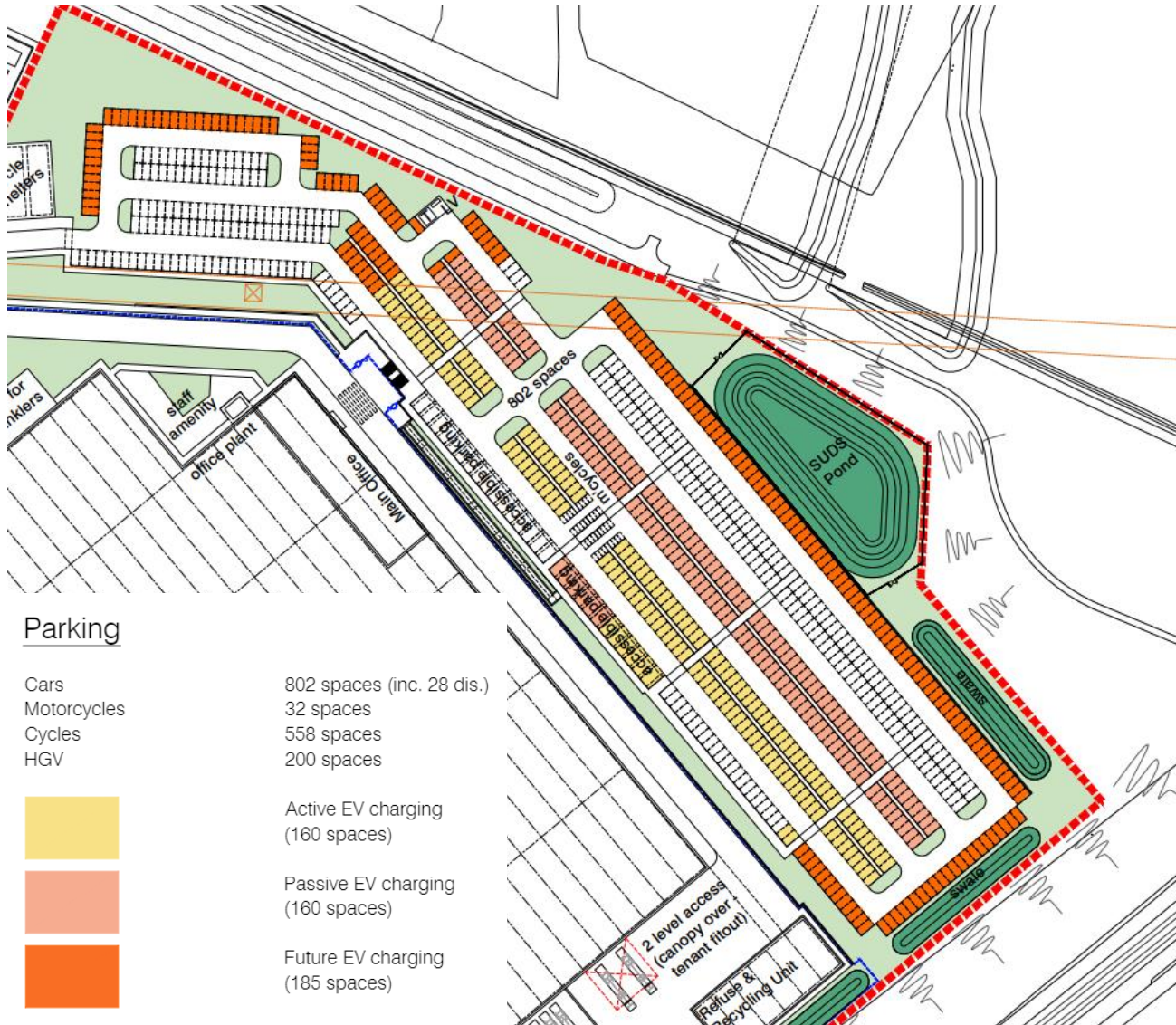
2 Cycle Shelter_Elevation A
1:100



3 Cycle Shelter_Elevation B
1:100

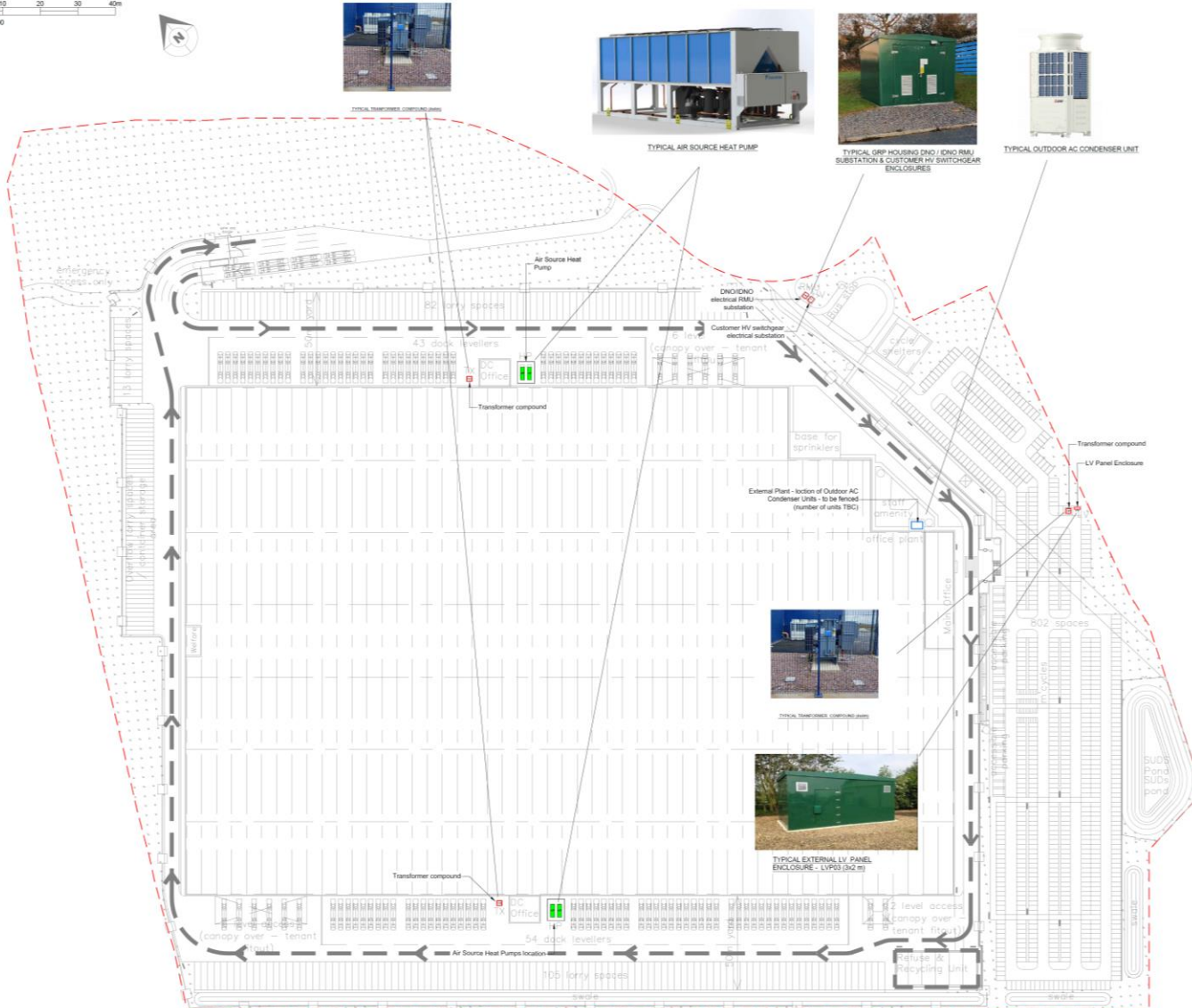


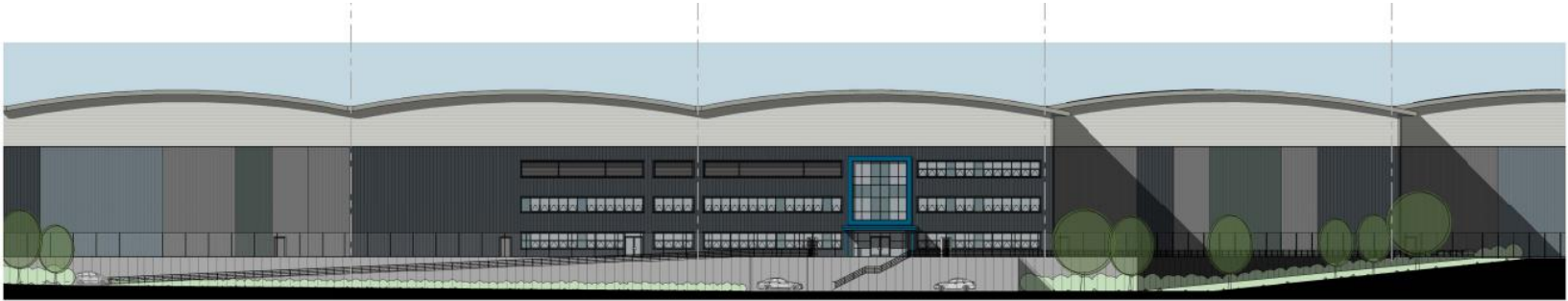
4 Cycle Shelter_Typical Section
1:100



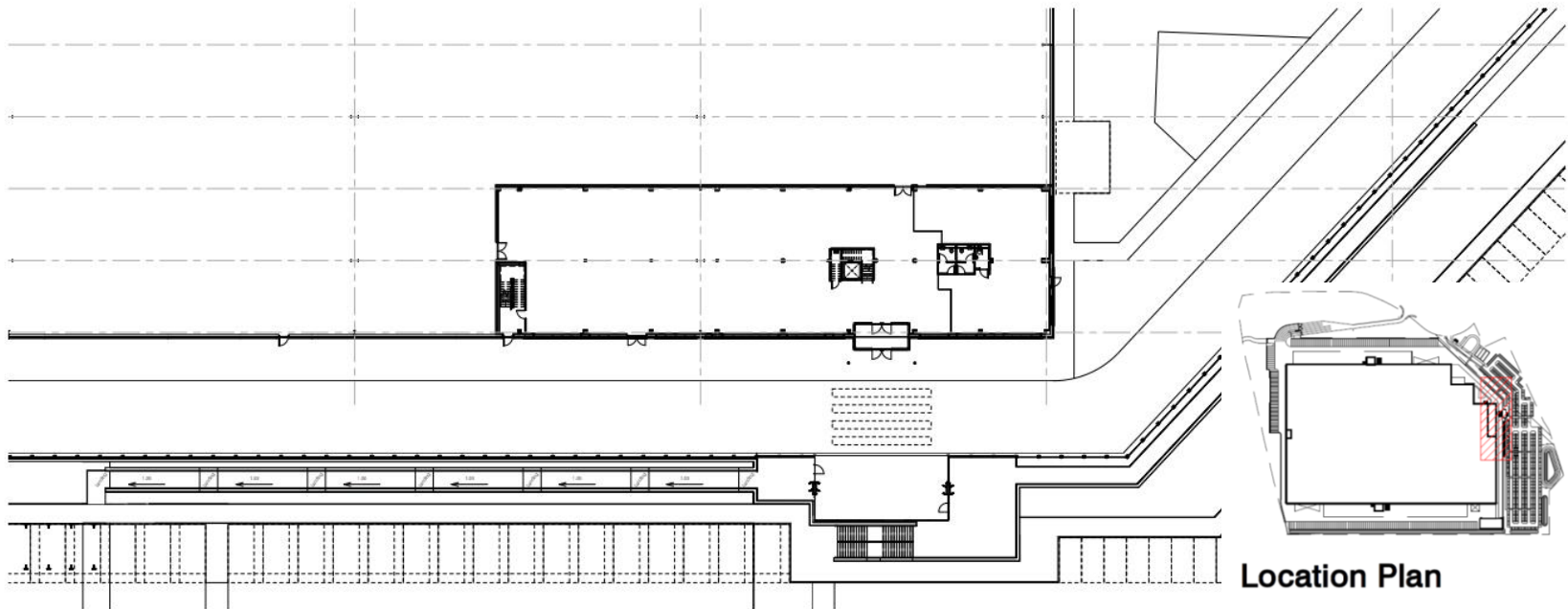
Access Signage







Entrance Ramp/ Steps Elevation

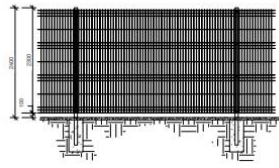


Entrance Ramp / Steps Detail Plan

Location Plan























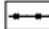
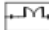





- External Finishes**
- To be in conjunction with the External Materials Schedule and James Blake Associates landscaping proposal drawings.
-  Car Park Areas
Concrete block paviments
Brindle with buff demarcation
 -  Access Roads
Tarmacadam
Thermoplastic road markings
 -  Footpaths
Concrete block paviments
Grey
 -  Fire Brigade Access
Grasscrete
 -  Fire Brigade Access
Section 278
 -  Gravel Margins
Pea shingle
Natural
 -  Service Yards
Natural brush finish concrete
with thermoplastic road markings
 -  SUDS
Sustainable urban drainage
ponds and swales
 -  Soft Landscaping
Refer to Landscape Architects
drawings
 -  Fencing
2.4m high ppc weldmesh
fencing with matching turnstiles,
pedestrian and vehicle gates
Black

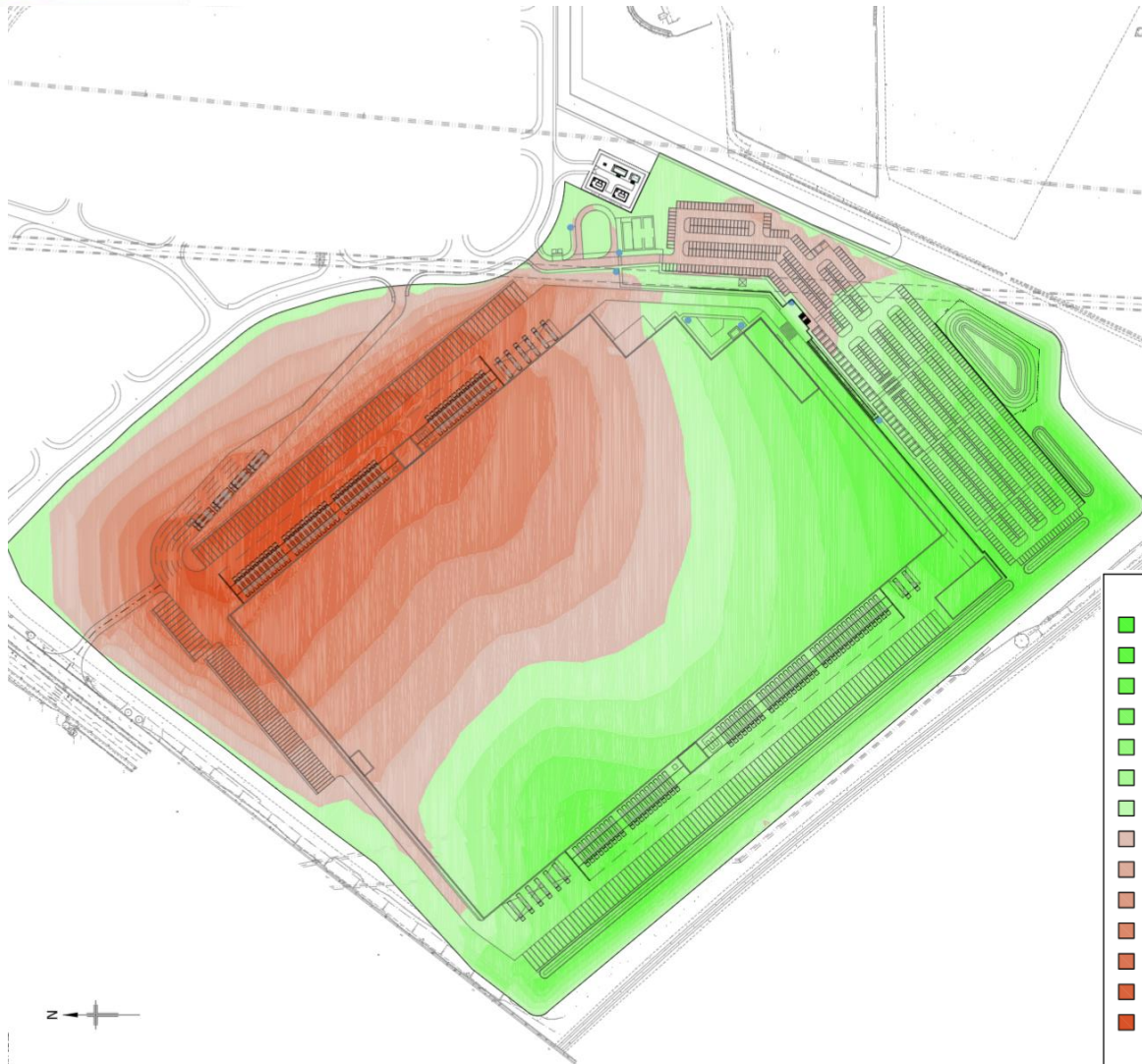


Proposed Landscaping Plan



-  RED LINE APPLICATION BOUNDARY
-  PROPOSED FEATHERED TREE, INCLUDING STAKE AND TIE. SEE SPECIFICATION NOTES 1.1, 2.2, 2.3, 2.5, 3.1-3.4, 4.1-4.2 AND 5.1.
-  PROPOSED STANDARD TREE, INCLUDING DOUBLE STAKE AND TIE. SEE SPECIFICATION NOTES 1.1, 2.2, 2.3, 2.5, 3.1-3.4, 4.1-4.2 AND 5.1.
-  PROPOSED HEAVY STANDARD TREE, INCLUDING DOUBLE STAKE AND TIE. SEE SPECIFICATION NOTES 1.1, 2.2, 2.3, 2.5, 3.1-3.4, 4.1-4.2 AND 5.1.
-  PROPOSED EXTRA HEAVY STANDARD TREE, INCLUDING DOUBLE STAKE AND TIE. SEE SPECIFICATION NOTES 1.1, 2.2, 2.3, 2.5, 3.1-3.4, 4.1-4.2 AND 5.1.
-  PROPOSED CONIFEROUS OR BROAD LEAF EVERGREEN TREE, INCLUDING STAKE AND TIE. SEE SPECIFICATION NOTES 1.1, 2.2, 2.3, 2.5, 3.1-3.4, 4.1-4.2 AND 5.1.
-  SHRUB AND HERBACEOUS PLANTING, INCLUDING BIODEGRADABLE SHEET AND BARK MULCH (ACCORDING TO SPECIFICATION). SEE SPECIFICATION NOTES 1.1-1.2, 2.1-2.3, 3.1-3.3, 4.1-4.2 AND 5.1.
-  GROUND COVER PLANTING IN MIXES, INCLUDING BIODEGRADABLE SHEET AND BARK MULCH (ACCORDING TO SPECIFICATION). SEE SPECIFICATION NOTES 1.1-1.2, 2.1-2.3, 3.1-3.3, 4.1-4.2 AND 5.1.
-  NATIVE WHP AND SHRUB PLANTING IN MIXES, INCLUDING BIODEGRADABLE SHEET AND BARK MULCH (ACCORDING TO SPECIFICATION). SEE SPECIFICATION NOTES 1.1-1.2, 2.1-2.3, 3.1-3.3, 4.1-4.2 AND 5.1.
-  HEDGE PLANTING, INCLUDING BIODEGRADABLE SHEET AND BARK MULCH (ACCORDING TO SPECIFICATION). REFER TO HEDGE SCHEDULES ON PLAN AND THE SCHEDULE OF QUANTITIES. SEE SPECIFICATION NOTES 1.1-1.2, 2.1-2.3, 3.1-3.3, 4.1-4.2 AND 5.1.
-  SEEDED GRASS AREA. REFER TO PLANT SCHEDULE FOR SPECIFICATION OF MIX.
-  SPECIMEN SHRUBS IN SHRUB BEDS OR PIT PLANTED IN GRASS/PAVEMENT. SPECIMEN SHRUBS IN GRASS ARE MEASURED SEPARATELY IN SCHEDULE OF QUANTITIES. SEE SPECIFICATION NOTES A1, B1-3, C1-3, D1-2 AND E1.
-  CULTIVATED TURF UNLESS OTHERWISE STATED ON PLAN. SEE SPECIFICATION NOTES B4, C1 AND E1.
-  WILDFLOWER SEEDED AREA. REFER TO PLANT SCHEDULE FOR SPECIFICATION OF MIX.
-  WILDFLOWER SEEDED AREA WITH MOWN PATH. REFER TO PLANT SCHEDULE FOR SPECIFICATION OF MIX.
-  WET WILDFLOWER SEEDED AREA. REFER TO PLANT SCHEDULE FOR SPECIFICATION OF MIX.
-  MARGINAL PLANTING MIX. REFER TO PLANT SCHEDULE FOR SPECIFICATION OF MIX.
-  BULB PLANTING IN MIXES, SPRING FLOWERING VARIETIES. REFER TO SCHEDULE FOR FURTHER INFORMATION.
-  EXISTING TREE TO BE RETAINED. SEE GENERAL NOTE A1 AND E1. IF PREPARED, SEE ALSO JAMES BLAKE ASSOCIATES PLAN AND SCHEDULE FOR ANY SURGERY WORKS.
-  EXISTING VEGETATION GROUP OR HEDGE TO BE RETAINED. SEE GENERAL NOTE A1 AND E1. IF PREPARED, SEE ALSO JAMES BLAKE ASSOCIATES PLAN AND SCHEDULE FOR ANY SURGERY WORKS.
-  GRADIENTS/LOPING GROUND - SEE ENGINEERING PROPOSALS FOR LEVELS INFORMATION.
-  RABBIT PROOF FENCE - GALVANISED FENCE 900MM HIGH ABOVE GROUND, 300MM BELOW GROUND. SEE INSET DETAIL L - DR W/ING JEA 20-104 - 33
-  1.2 M HIGH TIMBER POST AND THREE RAIL FENCE WITH DOUBLE LEAF MAINTENANCE ACCESS GATES TO MATCH.
-  WOODSCAPE - (US 110-3020 SQUARE LOCKABLE LITTER BIN. AVAILABLE FROM WOODSCAPE.CO.UK OR SIMILAR AND APPROVED.
-  MILL BACKREST SEAT - 450mm LONG, INCLUDING HARD GROUND ANCHORING AVAILABLE FROM WOODSCAPE.CO.UK OR SIMILAR AND APPROVED.
-  BURLINGTON PICNIC SET - 2540MM LONG, 2 HD SINGLE BENCH OPTION TO ALLOW FOR WHEELCHAIR ACCESS. INCLUDING HARD GROUND ANCHORING AVAILABLE FROM WOODSCAPE.CO.UK OR SIMILAR AND APPROVED.
-  HOODIN PATH WITH PRESSURE TREATED TIMBER EDGE, OVER COMPACTED MOT 3 SUBGRADE, OVER TYPICAL 1000 GEDTEXTILE OR SIMILAR AND APPROVED.

Proposed Cut and Fill Strategy



Height Bands	Cut Volume	Fill Volume
Fill 6m - 7m	--	48.40m ³
Fill 5m - 6m	--	3077.16m ³
Fill 4m - 5m	--	15557.28m ³
Fill 3m - 4m	--	33963.51m ³
Fill 2m - 3m	--	58290.00m ³
Fill 1m - 2m	--	86249.00m ³
Fill 0m - 1m	--	111749.42m ³
Cut 0m - 1m	102643.81m ³	--
Cut 1m - 2m	76886.85m ³	--
Cut 2m - 3m	57175.46m ³	--
Cut 3m - 4m	39923.99m ³	--
Cut 4m - 5m	23584.63m ³	--
Cut 5m - 6m	12164.57m ³	--
Cut 6m - 7m	3064.86m ³	--
Total Cut: 315444.16m ³		
Total Fill: 308934.77m ³		
NET Cut : 6509.39m ³		



Site Sections



